



# HAMMOND 142/144/146



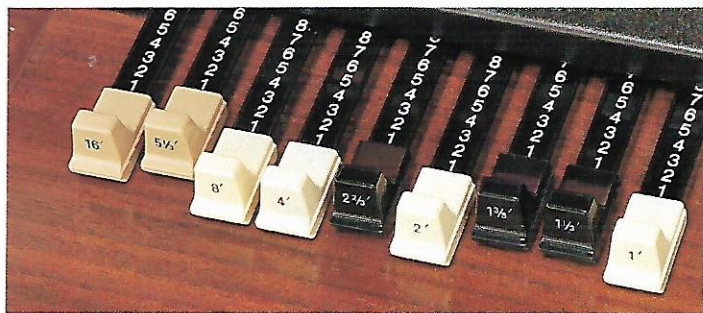
**New K2 series**  
with DIGITAL RHYTHMS and  
SYNTHESIZED VOICES





**The Models 142K2, 144K2 and 146K2 represent the blending of the finest tradition of "Hammond Sound" with the very latest innovative features and effects.**

All three models offer the un-paralleled versatility of 9 Harmonic Tonebars™ for the Upper Keyboard. By simply setting these in varying shapes and patterns, literally millions of tonal combinations can be created including all those distinctive "Hammond Sounds". Tonebars are fun, interesting, easy to use and provide a never ending challenge to your musical creativity.



In addition to Tonebars, tab stops are provided offering a wide range of voices such as Clarinet, Trombone, Trumpet and Strings. Percussion Voices include Piano, Vibraharp and Hawaiian Guitar. Jazz lovers will also enjoy 3rd Harmonic Percussion, so often featured by top Hammond artists.

Further tab stops are provided for the Lower Keyboard and a Manual Balance Control enables the player to determine preferred volume levels.

Dramatic registration changes can be instantly achieved by use of 3 self-illuminating Organ Pre-sets and Tonebar Cancel.

Professional sounding Arpeggios, normally requiring hours of practice, are instantly available with Fascinating Fingers® and Variable Reverberation brings "Concert Hall" acoustics to even the smallest living room.

The Models 142K2, 144K2 and 146K2 reflect Hammond's total commitment towards the very best in true organ sound. Therefore all 3 models feature an in-built Leslie® Speaker System, selective for Upper and Lower Keyboards providing un-paralleled acoustic animation. The subtle use of Tremolo and Chorale adds the essential elements of emotion and expression.



# HAMMOND



MODEL  
**144**

## Pro Chord

Yet another important feature on all models is Pro Chord, which automatically adds full harmony to any single note melody played on the Upper Keyboard.

The application of the latest **digital technology** offers new and authentic sounding rhythm. 12 Rhythm patterns are provided, from traditional Waltz to Bossa Nova and contemporary Disco, and can be introduced by self-illuminating control buttons. Hammond's exclusive Auto Vari® means that rhythm patterns change automatically whilst Drum Breaks can be introduced at any time at the player's discretion. Rhythm speed can be programmed by simply tapping Touch Tempo.....another Hammond exclusive.



Auto-chord means that your accompaniment will play in correct rhythm sequence and pedals will play automatically.

## PHASE GUITAR

Phase Guitar is another new Hammond feature, designed for today's music and adds a new dimension to accompaniments either in Autochord or normal playing mode.

The "Soloist" offers the realism of 5 'synthesized' Solo Voice. Brassy Trumpet, Sax, Trombone, "breathy" Pan Flute or Contemporary Syntha-Sound can be introduced at the press of a button. "Soloist" voices can be used on their own, or in combination with organ voices and/or Tonebars, providing countless "orchestral" and "big band" possibilities.



Each of the aforementioned features are to be found on the Model 142, thereby providing this model with





MODEL  
146

a highly comprehensive specification ensuring literally years of music discovery and enjoyment.

The Hammond tonal spectrum broadens even further with the introduction of Philharmonic Strings® on the Models 144K2 and 146K2. The orchestral quality of Philharmonic Strings is highlighted when used with Sustain to provide the romantic sounds of cascading violins, violas and cello.

Fascinating Fingers offers greater flexibility with a choice of modes and voices and the theme of ever increasing sophistication is further demonstrated by the provision of two Pedal pitches (16' and 8'), variable Pedal Volume and Variable Upper Keyboard Sustain. Versatility takes on a new meaning as we meet the Model 146K2. In addition to extra Upper Keyboard and Percussion Voices, the Lower Keyboard features Flutes at three pitch levels (8', 4' and 2') and Strings at two pitch levels (8' and 4').

The Model 146K2 also introduces Auto-Vari 48, whereby each of the 12 digital rhythms offer 4 Variations (A thru'D) which can be selected immediately by the player or pre-programmed to change automatically at 1, 2, 4, 8 or 16 bar intervals.



To maximise the tonal resources of the Model 146K2, three channels of amplification are provided and organ, solo and rhythm voices assume a "living presence" offering even greater excitement, and creative satisfaction. Finally, superb and elegant cabinet styling ensures that the Model 146K2 will grace the home of the discerning organ buyer. Unique three channel sound system with Acoustical Mix is a part of the fabulous tone quality. Three separate amplifiers channeled through a specially designed high performance speaker system offer complete sound separation, total versatility, and the majestic sound that thrills and inspires. (144K2, 146K2) Similar to the Models 142K2 and 144K2, the Model 146K2 has a roll top keyboard cover.

**Hammond's continual leadership is reflected in these three models, which utilise advanced technology to provide the ultimate musical performance at a realistic price.**



# MODEL 142



## SPECIFICATION MODEL 142

### UPPER VOICES

Sustain  
Clarinet 16'  
Trombone 16'  
Trumpet 8'  
String 16'  
String 8'

### UPPER HARMONIC TONEBARS™

One set of 9  
(16', 5-1/3', 8', 4', 2-2/3', 2',  
1-3/5', 1-1/3', 1')

### PERCUSSION

Hawaiian Guitar  
Vibraharp  
Third Harmonic  
Banjo (Repeating)  
Piano

### SOLOIST

Sax	Syntha Sound
Trombone	Volume Slider
Trumpet	
Pan Flute	

### LOWER VOICES

Flute 8'	String 8'
Flute 4'	Horn 8'

### PEDAL

Sustain	Pedal Volume
8'•16'/8'	

### ANIMATION

Leslie® Speaker	
Upper	Vibrato On
Lower	Vibrato Small
Chorale	Vibrato Delayed

### FASCINATING FINGERS®

#### PRESETS

3 Organ Plus Cancel  
Tonebar Cancel

#### PRO CHORD™

#### FUNCTIONAL CONTROLS

(2) 44 Note Keyboard—F-C  
13 Note Pedalboard  
Power On/Off w/Pilot Light  
Balanced Expression Pedal  
Rhythm Switch  
Manual Balance  
Headphone Jack  
External Input Jack  
Tone Cabinet Plug  
Variable Reverberation

### DIGITAL AUTO VARI® 24 RHYTHM

Waltz	Phase Guitar
March 4/4-Polka	Silent Sound/Touch Tempo
Ballad	Touch Tempo®
Country	Autochord®
Jazz	Touch-Start
Hard Rock	Auto-Vari
Disco	Rhythm Break
Samba	Tempo-Slider
Bossa Nova	Volume-Slider
Cha-Cha	
Rhumba-Beguine	
Tango	

### COMPOSE-A-CHORD--PLUS

13 Pre-Programmed Accompaniments

#### 96 One-Finger Chords

Major	Major 6th
Minor	Augmented
7th	Diminished 7th
Minor 7th	Reset
Major 7th	

Three Finger Chords

Memory

Auto Accompaniment

Program

Auto Perform

Bass Walk

### AUDIO SYSTEM

2-35 Watt Amplifiers

8" Leslie Tremolo

12" Wide Range Speaker

### CABINET DIMENSIONS

Width 43-9/10"

Depth 25-3/5"

Height 38-2/5"

w/Music Desk 44-15/16"

Weight Approx. 172 Lbs.

\* Roll top Keyboard cover with power on indicator lamp.



# MODEL 144



## SPECIFICATION MODEL 144

### UPPER VOICES

Sustain (Variable)  
Clarinet 16'  
Trombone 16'  
Trumpet 8'  
String 16'  
String 8'

### UPPER HARMONIC TONEBARS™

One set of 9  
(16', 5-1/3', 8', 4', 2-2/3', 2',  
1-3/5', 1-1/3', 1')

### PERCUSSION

Hawaiian Guitar  
Vibraharp  
Third Harmonic  
Banjo (Repeating)  
Piano

### SOLOIST

Sax  
Trombone  
Trumpet  
Pan Flute  
Syntha Sound  
Volume Slider

### LOWER VOICES

Flute 8'  
Flute 4'  
String 8'  
Horn 8'

### PEDAL

Sustain  
Diapason 16'  
Flute 8'  
Pedal Volume

### ANIMATION

Leslie® Speaker  
Upper  
Lower  
Reverb  
Chorale  
Vibrato On  
Vibrato Small  
Vibrato Delayed

### FASCINATING FINGERS®

Piano  
Zither  
Up/Down  
Single  
Volume Slider

### PRESETS

3 Organ Plus Cancel  
Tonebar Cancel

### PRO CHORD™

### PHILHARMONIC STRINGS®

Acoustic Mix (Stereo)  
Upper 16'  
Upper 8'  
Lower 8'  
Volume Slider

### FUNCTIONAL CONTROLS

(2) 44 Note Keyboard—F-C  
13 Note Pedalboard  
Power On/Off w/Pilot Light  
Balanced Expression Pedal  
Rhythm Switch  
Manual Balance  
Headphone Jack  
External Input Jack  
Tone Cabinet Plug  
Variable Reverberation

### DIGITAL AUTO VARI® 24 RHYTHM

Waltz  
March 4/4-Polka  
Ballad  
Country  
Jazz  
Hard Rock  
Disco  
Samba  
Bossa Nova  
Cha-Cha  
Rhumba-Beguine  
Tango  
Phase Guitar  
Silent Sound/Touch Tempo  
Touch Tempo®  
Autochord®  
Touch-Start  
Auto-Vari  
Rhythm Break  
Tempo-Slider  
Volume-Slider

### COMPOSE-A-CHORD--PLUS

13 Pre-Programmed Accompaniments  
96 One-Finger Chords

Major  
Minor  
7th  
Minor 7th  
Major 7th  
Major 6th  
Augmented  
Diminished 7th  
Reset

Three Finger Chords  
Memory  
Auto Accompaniment  
Program  
Auto Perform  
Bass Walk  
Brite Foot®  
Chord Quiz

### AUDIO SYSTEM

3 Channels  
35+35+35 Watt Amplifiers  
12" Woofer  
6" Tweeter  
8" Leslie Tremolo  
8" Animation (Right side)

### CABINET DIMENSIONS

Width 43-9/10"  
Depth 25-3/5"  
Height 38-2/5"  
w/Music Desk 44-15/16"  
Weight Approx. 172 Lbs.

\* Roll top Keyboard cover with power on indicator lamp.



# MODEL 146



## SPECIFICATION MODEL 146

### UPPER VOICES

Sustain (Variable) Oboe 8'  
Clarinet 16' String 16'  
Trombone 16' String 8'  
Trumpet 8'

### UPPER HARMONIC TONEBARS™

One set of 9 (16', 5-1/3', 8', 4', 2-2/3', 2', 1-3/5', 1-1/3', 1')

### PERCUSSION

Hawaiian Guitar  
Vibraharp  
Second Harmonic  
Third Harmonic  
Banjo (Repeating)  
Harpsichord  
Piano

### SOLOIST

Sax Synth Sound  
Trombone Volume Slider  
Trumpet  
Pan Flute

### LOWER VOICES

Flute 8' String 8'  
Flute 4' String 4'  
Flute 2' Horn 8'

### PEDAL

Sustain  
Bass Guitar  
Diapason 16'  
Flute 8'  
Pedal Volume

### ANIMATION

Leslie® Speaker  
Upper Vibrato On  
Lower Vibrato Small  
Reverb Vibrato Delayed  
Chorale

### FASCINATING FINGERS®

Piano Single  
Zither Volume Slider  
Up/Down

### PRESETS

3 Organ Plus Cancel  
Tonebar Cancel

### PRO CHORD™

### PHILHARMONIC STRINGS®

Acoustic Mix (Stereo)  
Upper 16'  
Upper 8'  
Lower 8'  
Volume Slider

### FUNCTIONAL CONTROLS

(2) 44 Note Keyboard—F-C  
13 Note Pedalboard  
Power On/Off w/Pilot Light  
Balanced Expression Pedal  
Rhythm Switch  
Manual Balance  
Headphone Jack  
External Input Jack  
Tone Cabinet Plug  
Variable Reverberation

### DIGITAL AUTO VARI® 48 RHYTHM

Waltz Phase Guitar  
March 4/4-Polka Silent Sound/Touch Tempo  
Ballad Touch Tempo®  
Country Autochord®  
Jazz Touch-Start  
Hard Rock Auto-Vari  
Disco Rhythm Break  
Samba Tempo-Slider  
Bossa Nova Volume-Slider  
Cha-Cha Measure Selector  
Rhumba-Beguine  
Tango  
4-Rhythm variations (A, B, C, D)

### COMPOSE-A-CHORD--PLUS

13 Pre-Programmed Accompaniments  
96 One-Finger Chords  
Major Major 6th  
Minor Augmented  
7th Diminished 7th  
Minor 7th Reset  
Major 7th

Three Finger Chords Auto Perform  
Memory Bass Walk  
Auto Accompaniment Brite Foot®  
Program Chord Quiz

### AUDIO SYSTEM

3 Channels  
35+35+35 Watt Amplifiers  
12" Woofer  
6" Tweeter  
8" Leslie Tremolo  
8" Animation (Right side)

### CABINET DIMENSIONS

Width 44-3/5"  
Depth 25-3/5"  
Height 38-1/3"  
w/Music Desk 44-15/16"  
Weight Approx. 172 Lbs.

\* Roll top Keyboard cover with power on indicator lamp.



# HAMMOND

## The First name in organs

The Hammond Organ was invented by Laurens Hammond in 1934. Its impact upon the world of music was almost instantaneous.

Foremost among its unique features was the Harmonic Tonebar system of registration offering un-paralleled versatility. Professional musicians soon began featuring the Hammond Organ on radio, records, films, etc. and the "Hammond Sound" was born.

But the success and popularity of the Hammond Organ was not confined to professional and accomplished musicians.

The development of new 'ease of play' features brought the joy and pleasure of music making to countless thousands of people in all age groups who never thought they would be able to play.

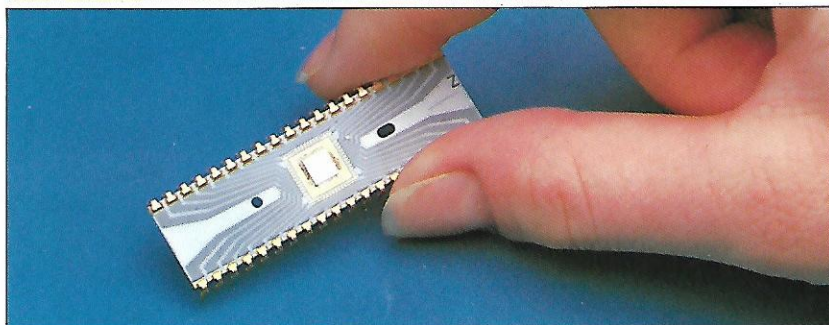
Nowadays the famous "Hammond Sound" is created by the most up-to-date technology providing musical performance and reliability undreamed of only a few years ago.

Why wait any longer? Your Hammond Organ Dealer has been specially selected to help and advise you.

See, hear and play the Hammond Organ—today.



Laurens Hammond seated at Hammond model "A" Organ, 1934.



Hammond engineering leadership is reflected in the exclusive L.S.I. (Large Scale Integrated) multiplex circuitry for the 142/144/146 series. These custom L.S.I. circuits contain up to 8000 separate electronic devices in each tiny (approx. 1/4" square) chip. The result is outstanding performance and musical integrity with unmatched reliability.

**WHY SETTLE FOR LESS THAN THE BEST!**



### HAMMOND ORGAN

SAKATA SHOKAI, LTD.

Minami-Morimachi Chuo Building

6-2, 2 chome, Higashi-Tenma, Kita-ku, Osaka, Japan

Telex: SAKATA J63397 Tel: 06-356-2154

Cable: SAKATAINK OSAKA

Hammond Organ Company reserves the right to change prices, specifications, designs, models and discontinue without notice or liability. Due to photographic and printing limitations, the illustrations of organs contained in this literature may differ from the original in colour and grain.