



COMMODORE



HAMMOND® ORGAN

Presenting Hammond's new Commodore... a full performance console with the quality workmanship and innovative features that have become synonymous with the foremost name in organ sound.

This three-channel console... with its two 61 note keyboards and 25 pedals... boasts a list of features that are sure to capture your imagination.

The distinctive "Hammond Sound" is provided by the traditional HARMONIC TONEBARS on both the upper and lower manuals. These tonebars offer unmatched versatility and a quality sound that you come to expect from Hammond.

The new PHILHARMONIC STRINGS™ recreate the shimmering beauty of an orchestral string section. The upper manual offers three levels of pitch (16', 8', & 4') and may be combined with the tonebars as well as any other division on the organ for interesting orchestration. The lower manual features two levels of pitch (8', & 4') and provides three preset tonebar and string combinations with the Flute/String Chorus Tab. Whether

playing lush, string solos or rich background accompaniment you have total command of expression with Variable Attack, Variable Sustain, and Variable Volume on both manuals. The breathtaking Philharmonic Strings is a perfect compliment to the exclusive "Hammond Sound".

Versatility is further expanded in the percussion division of the Commodore. The percussion section incorporates independent keying not only with the Piano and Bright Division, but also on the Synthesis Second and Third Harmonic Percussion.

KEY CLICK in the Synthesis Percussion Section brings back the Hammond Sound reminiscent of years past. The

COMM



Bright Percussion Section has five authentic voices: Pluck, Pizzicato, Banjo, Harpsichord, Piano and the ever-popular Hammond Piano Solo. Second Voice converts the Bright Percussion into Violin, English Horn, Post Horn, Kinura and Diapason. A Variable Percussion Level Slider allows you to balance the percussion section with any other division of the organ.

Rich pedal voices on the Commodore provide a selection of 16' and 8' pedal tonebars...plus Pedal Sustain, Bass Guitar and Pedal Mute.

Hammond's exclusive Easy-Play Group teaches the beginner to progress musically, while providing a new spectrum of creativity for the accomplished musician. Patented NOTE-A-CHORD™ with visual memory, 20 ONE-FINGER-CHORDS, ELECTRONIC

MEMORY, AUTOCHORD® and Hammond's exclusive AUTO VARI® 64 provides the realism of a live drummer with 16 individual rhythms (including an exciting new "Disco" pattern) able to vary automatically or be played stationary in any of four different patterns.

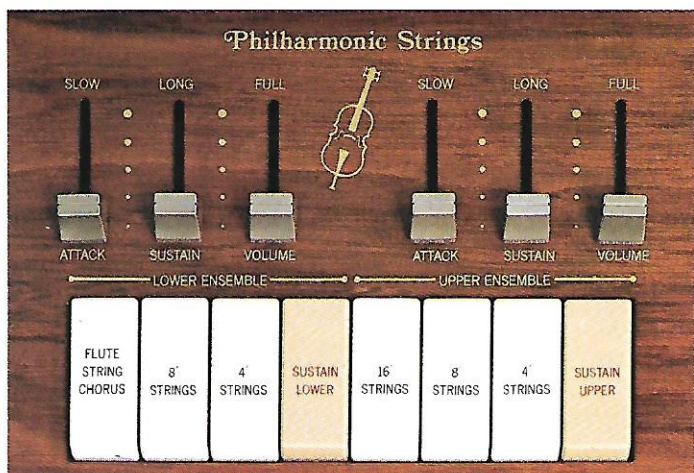
The dramatic three channel sound of the Commodore puts you on center stage for every performance! One channel features a Leslie® speaker powered by a 35 watt amplifier, the main channel has full-fidelity 15" and 6" speakers with another 35 watt amplifier and the Stereo String Channel has a specially designed 8" speaker with a 10 watt amplifier.

It's said that the sound of a Hammond is often copied, but never duplicated. This exclusive sound reflects the dedication of Hammond to engineering leadership. Your Commodore blends the most advanced technology...including MULTIPLEX/L.S.I. CIRCUITRY with a focus on rich, full tone and unmatched versatility. In addition, Hammond's quality control gives you a level of reliability that will ensure years and years of family enjoyment.

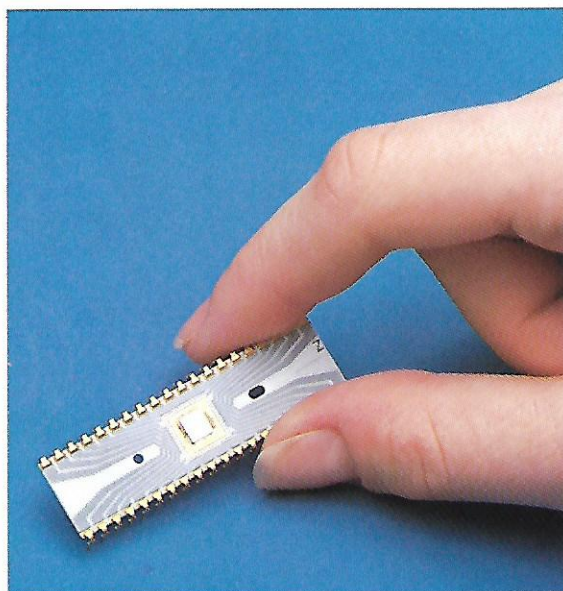
Hammond...an investment that stands the test of time. With this record of achievement, you won't want to settle for anything less than a Hammond!

COMODORE





Philharmonic Strings™



Hammond engineering leadership is reflected in the exclusive LSI (Large Scale Integrated) Multiplex Synthesis Circuitry for the Commodore. These custom LSI circuits contain up to 8,000 separate transistors in each tiny (about 1/4" square) chip. The result is outstanding performance and musical integrity with unmatched reliability.

SPECIFICATIONS:

- **Multiplex Synthesis Technology**
- **Two 61-Note Keyboards**
25 Pedals
- **Harmonic Tonebars**
UPPER KEYBOARD: One set of 9 Harmonic Tonebars (16', 5-1/3', 8', 4', 2-2/3', 2', 1-3/5', 1-1/3', 1')
LOWER KEYBOARD: One set of 9 Harmonic Tonebars (16', 5-1/3', 8', 4', 2-2/3', 2', 1-3/5', 1-1/3', 1')
- **Percussion**
SYNTHESIS PERCUSSION: Variable Repeat, Key Click, Percussion Fast, Second and Third Harmonic Percussion.
BRIGHT PERCUSSION: Pluck, Pizzicato, Banjo, Harpsichord, Piano, Piano Solo
SECOND VOICES: Violin, English Horn, Post Horn, Kinura, Diapason, Variable Volume Slider
- **Pedals**
16' and 8' Tonebars, Pedal Sustain, Bass Guitar, Pedal Mute
- **Easy Play Group**
Variable Bass Walk, Memory, Note-A-Chord™, One Finger Chords
- **Autochord®**
- **Auto Vari® 64**
16 RHYTHMS EACH WITH FOUR VARIATIONS: Measure Selector, Tempo Selector, Volume Selector, Silent/Sound
- **Continuous/Touch Start,**
Foot Switch Reset

- **Follow the Player Rhythms**
Bass Drum, Cymbal, Brush, Snare Drum
- **Preset Pistons**
1(Vibra Harp), 2(Theater Organ), 3(jazz), 4(Full Tibias), 5(Full Organ), (Cancel)
- **Animation**
Leslie Upper, Leslie Lower, Leslie Reverb, Leslie Chorale, Vibrato On, Vibrato Small, Delayed Vibrato
- **Variable Reverb**
- **Brilliance, Volume Soft**
- **Philharmonic Strings™**
UPPER KEYBOARD: 16', 8' and 4' Strings, Variable Attack, Variable Sustain, Variable Volume
LOWER KEYBOARD: Flute/String Chorus, 8' and 4' Strings, Variable Attack, Variable Sustain, Variable Volume
- **Sustain**
Variable Upper Manual, Variable Lower Manual
- **Stereo Headphone Jack**
- **External Tone Cabinet Outlet**
- **Speakers**
One 15", Two 8", One 6" Speaker
- **Power Amplifiers**
2-35 Watt, 1-10 Watt
- **Dimensions**
119cm, W. 70.5cm, D. 112.2cm, H. (129 cm. H with music rack up)
- **Weight**
153.5 Kg (Including bench and pedals)

HAMMOND ORGAN

SAKATA SHOKAI, LTD.
Minami-Morimachi Chuo Building
6-2, 2 chome, Higashi-Tenma, Kita-ku, Osaka, Japan
Telex: SAKATA J63397 Tel: 06-356-2154
Cable: SAKATAINK OSAKA

