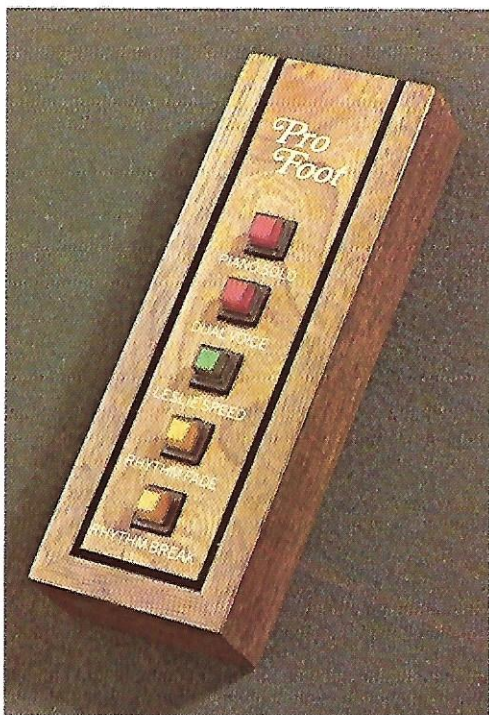


Elegante

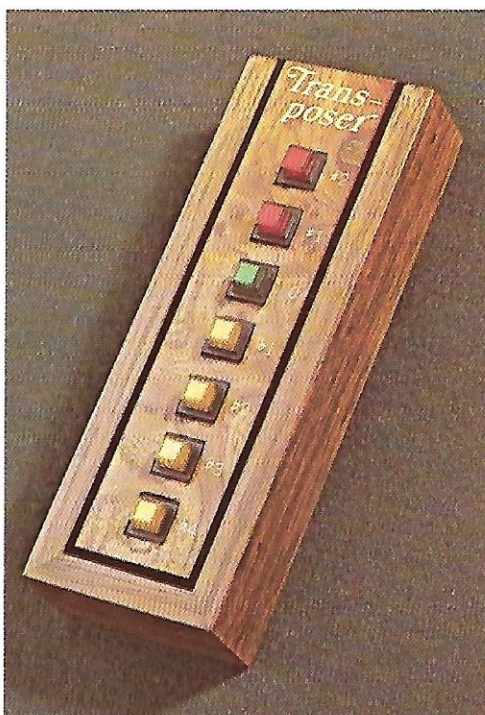


HAMMOND® ORGAN
A MEMBER OF THE MARMON GROUP OF COMPANIES





PRO FOOT™ is activated with a switch on the expression pedal. It provides an easy and instant way to preset five professional special effects without removing your hands from the keyboard.

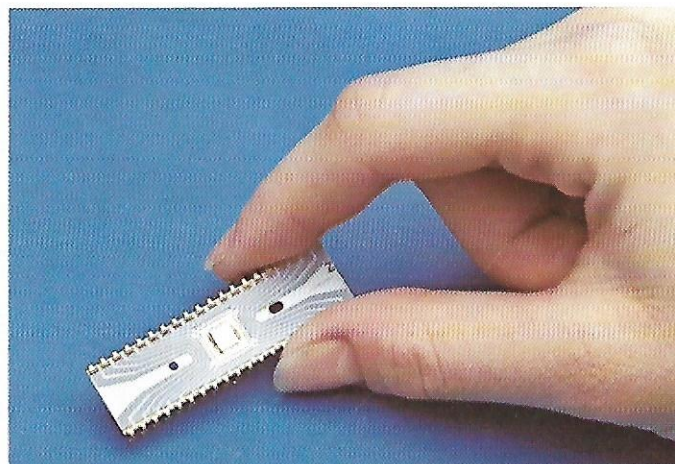


TRANSPOSER Up, down, all around at the touch of a button. Instantly transpose to six additional keys without changing the music.

RHYTHM BREAK A series of original Rhythm Breaks are available at the tap of your finger or touch of your toe. Add the realism of a live drummer to all of your playing styles.



PRO CHORD™ offers the professional sounds of right hand block chords with just one finger.



LSI Hammond engineering leadership is reflected in the exclusive LSI (Large Scale Integrated) multiplex synthesis circuitry. The result is outstanding performance and musical integrity with unmatched reliability.

Hammond proudly presents the flagship of the Hammond Organ line... the exciting new ELEGANTE. The ELEGANTE, a new four channel instrument, is truly a unique console organ. Musical creativity and professionalism are blended in the finest tradition of "Hammond Sound" with the latest in distinctive features and effects.

These new features include Hammond's exclusive PRO FOOT™, an easy and instant way to preset five professional special effects without ever having to remove your hands from the keyboards, and PRO CHORD™, professional sounding right hand chords with only one finger. In addition the ELEGANTE spotlights the breathtaking orchestral PHILHARMONIC STRINGS™, the dazzling arpeggios of FASCINATING FINGERS™, and the newly designed AUTO-VARI® 64, featuring programmable rhythmic variations, a variety of original rhythm breaks, and Hammond's exclusive Touch Tempo®.

The Hammond name is synonymous with quality organ sound. This tradition of excellence is blended with uncompromising standards in manufacturing to give your ELEGANTE unmatched musical versatility and dependability. It is truly an investment that stands the test of time!

PRO CHORD, a new Hammond innovation, gives you the possibility of playing full right hand chords with the touch of one finger. When engaged, harmony notes are automatically added above the melody note being played on the upper keyboard. Delightful right hand chords for the novice truly become Pro Chords in the hands of the professional.

In addition, PRO FOOT provides the opportunity to captivate you with an amazing display of professional special effects. A footswitch to the left of the expression pedal activates any one of the five illuminated effects: Piano Solo, Dual Voice, Leslie Speed, Rhythm Break, or Rhythm Fade. All these effects are at your command with just a nudge of your foot.

DUAL VOICE™, on the Brite Percussion, converts a single 8' pitch to a 16' and 4' pitch... recreating nostalgic sounds of the past and the "now sound of today and tomorrow". Using the Harpsichord, you can create a dramatic Grand Harpsichord... the Honky Tonk Piano recalls the realism of a player upright... or with the Piano, you'll sound like the fabulous Eddie Duchin's "Society Piano".

The ELEGANTE offers you the lush shimmering beauty of Hammond's PHILHARMONIC STRINGS, with 16', 8', and 4' pitches available on both manuals, you can create vibrant string solos or rich

background accompaniments. Variable Attack, Sustain, and Volume give you total command of expression as you listen to the PHILHARMONIC STRINGS through a three channel acoustical mix system. Used alone, with tonebars, or other voices on your ELEGANTE, you will note an authenticity, versatility, and flexibility never before possible.

Hammond's MELODY MAKER™ puts a variety of authentic preset voices conveniently at your fingertips. "Multiplex Synthesis" technology and deluxe filtering systems have been developed to duplicate the exact tonal characteristics of each individual instrument. The reedy Sax, hollow Clarinet, mellow Trombone, haunting Oboe, and brassy Trumpet produce realistic orchestral solos, as well as

Elegante



entire brass and reed sections. Exciting instrumental sounds are found with the breathy Accordion, romantic Hawaiian Guitar, sassy Do-Wah and unique Novelty. Variable Volume allows you to custom blend these voices with all the other upper manual voices for your own personal sound.

Your "third hand"... the amazing new FASCINATING FINGERS™, provides a variety of easy, professional sounding accompaniments for the beginner, and unlimited dramatic and exciting special effects for the experienced musician. With five different patterns and three distinctive combinable voices, you are only limited by your own imagination.

For the beginner, Hammond's exclusive Easy Play way to learning includes 20 musically correct ONE FINGER CHORDS. AUTOCHORD® and Hammond's exclusive

variable BASS WALK create automatic professional sounding chords and pedal accompaniments, with the realism of a live string bass player. Electronic MEMORY, as well as Hammond's patented NOTE-A-CHORD™, may be used with One Finger Chords or chords you form yourself... enabling the beginner as well as the experienced musician to benefit from these versatile easy play features.

The POLYSYNTHESIS PERCUSSION section hosts an impressive range of effects including the beautiful Vibraharp, Twin Mallet Marimba, and Chimes. Harmonic Percussion (1st, 2nd, 3rd, 4th, 5th, 6th, and 8th harmonics) and KEY CLICK duplicate the distinctive "Hammond Sound" of years past: Pizzicato, Banjo, Harpsichord, Honky Tonk Piano, and Piano are spectacularly reproduced in the Brite Percussion section. DUAL VOICE expands the capabilities of these voices by converting them to 16' and 4' pitch for creative versatility.

Easy, quick, and dramatic professional registration changes are yours with the ELEGANTE'S PISTON PRESETS. Nine specially selected and balanced settings for the entire instrument offer a wide spectrum of the most popular sounds. Additional preset capabilities are found in the eleven reverse key presets and cancel found on each of the two manuals.

HARMONIC TONEBARS are your symphony at home. This wide range of pure harmonic tones, offered on both the upper and lower manuals, permit almost infinite tonal combinations... and form the musical cornerstone for the famous and very recognizable "Hammond Sound". The ELEGANTE features two complete sets of 9 Harmonic Tonebars for each manual.

The peerless AUTO-VARI® 64 is totally enhanced with new flexibility and control... a new illuminated rhythm selector panel... Hammond's exclusive TOUCH TEMPO®... a variety of original Rhythm Breaks... even the capability of programming the variation possibilities in limitless combinations.

The ELEGANTE'S unique four channel sound system with Acoustical Mix is a part of the fabulous tone quality. Four separate amplifiers channeled through a specially designed high performance speaker system offer complete sound separation, total versatility, and the majestic sound that thrills and inspires.

The ELEGANTE... full console sound... unique features for musical versatility... the finest quality and craftsmanship backed by the trusted Hammond name. It's everything you've ever wanted in an organ... so why should you settle for anything less than a Hammond.

Elegante





SPECIFICATIONS

- **Multiplex Synthesis Technology**
- **Two 61-Note Keyboards**
25 Pedals
- **Harmonic Tonebars**
Two sets of 9 Harmonic Tonebars for each keyboard.
- **Accents**
Variable Repeat, Key Click, Percussion Fast, Pro Chord
- **Poly Synthesis Percussion**
1st, 2nd, 3rd, 4th, 5th, 6th, and 8th Harmonics, Vibraharp, Twin Mallet Marimba, and Chime Solo
- **Brite Percussion**
Dual Voice, Pizzicato, Banjo, Harpsichord, Honky Tonk Piano, Piano, and Solo Piano
- **Upper Manual Voices**
Tuba 16', Post Horn 8', Kinura 8', Diapason 8', Violin 4'
- **Lower Manual Voices**
Diapason 8', Horn 8', Violina 4'

- **Pedals**
16' and 8' Tonebars, Pedal Sustain (variable), Bass Guitar, Pedal Mute, Lower to Pedal
- **Easy Play Group**
Variable Bass Walk, Memory, Note-A-Chord™, One Finger Chords
- **Autochord®**
- **Auto-Vari® 64**
16 rhythms each with four programmable variations, Measure Selector, Tempo Selector, Volume Selector, Touch Tempo®, Rhythm Break, Continuous/Touch Start, Footswitch Reset.
- **Follow-The-Player-Rhythms**
Bass Drum, Cymbal, Brush, Snare Drum
- **Animation**
Leslie Upper, Leslie Lower, Leslie Reverb, Leslie Chorale, Vibrato On, Vibrato Small, Delayed Vibrato
- **Variable Reverb**
- **Brilliance, Volume Soft**
- **Philharmonic Strings™**
Each manual features 16', 8', and 4' Strings, Variable Attack, Variable Sustain, and Variable Volume
- **Fascinating Fingers™**
Patterns: Zig, Single, Up/Down, Strum
Voices: Piano, Zither, Banjo, Cancel, Variable Volume
- **Pro Foot™**
Piano Solo, Dual Voice, Leslie Speed, Rhythm Break, Rhythm Fade
- **Sustain**
Variable Upper Manual, Variable Lower Manual, Variable Pedal
- **Piston Presets**
Nine illuminated presets to register the entire organ
- **Preset Keys**
Eleven reverse preset keys to control flexibility of upper and lower manuals and tonebars
- **Headphone Jack**
- **Speakers**
One 15", Two 8", One 6-1/2" speaker
One 6" x 9" Leslie Rotosonic
- **Power Amplifiers**
2-35 Watt, 2-10 Watt
- **Dimensions**
53-1/2" L, 51-5/8" H (music rack up), 28-3/4" D
- **Weight**
441 pounds, including pedals and bench



HAMMOND® ORGAN

A MEMBER OF THE MARMON GROUP OF COMPANIES