



THE AURORA CLASSIC



HAMMOND® ORGAN

PHILHARMONIC STRINGS™ offer the shimmering beauty of the orchestral string section. These special voices have selectable pitches of 16', 8' and 4' on the upper manual, plus 8' and 4' on the lower. Playing lush string solos or rich background accompaniment, they may be used alone or combined with tonebars and other voices for added flexibility. As conductor of the Philharmonic Strings, you have total command of expression with Variable Attack, Variable Sustain, and Variable Volume.

With Hammond's MELODY MAKER™, you'll discover all the realism of instrumental solos. Simply depress any one of nine tabs and a light indicates your selection. Hear the reed begin to vibrate as the Sax plays, or the hollow wood sound of the Clarinet. Trombone, Do-Wah, Trumpet, Oboe, Accordion, Novelty and Hawaiian Guitar also highlight the natural characteristics of each instrument. Voices may be combined with upper manual

voices for interesting orchestration. Variable volume permits maximum control.

Heading the list of innovative Hammond easy-play features is the new FASCINATING FINGERS™. This "third hand" analyzes chords you are playing with your left hand. It then builds automatic arpeggios and other rapidly-sounding note patterns to provide professional sounding accompaniment and fascinating special effects. Select from four different modes: Zig, Single, Up/Down and Strum. You can voice these effects with lighted push buttons that give you the distinctive sounds of Piano, Zither and Banjo... which may be combined together for many different interesting variations.

The easy way to professional sounding music includes 20 ONE-FINGER CHORDS. Patented NOTE-A-CHORD®, with Visual Memory, locks notes in place for you. AUTOCHORD® alternates chord and pedal

notes in any rhythm pattern selected. And BRITE FOOT™ with Rehearse and Perform mode, sheds new light on learning to play the pedals. ELECTRONIC MEMORY remembers any one, three or four-finger chords, plus single notes played in a range of 24 notes on the lower manual. Regardless of your musical experience, everyone in the family will have fun playing the Aurora Classic!

The famous Hammond PIANO reflects unusual attention to authenticity with percussive decay and independent keying. Treble notes are bright and crisp, while low bass notes offer the resonance of a grand piano. You'll find yourself selecting music to show off your new piano styling.

The PERCUSSION SECTION hosts an impressive range of effects from Vibraharp to resounding Chimes. With special SECOND VOICE, instrumentation is expanded to include Violin, English an

THE AURORA



Post Horn, Diapason and a weepy Kinura reminiscent of old theater pipe organs. Variable Repeat, plus 2nd, 3rd, and 5th harmonics inspire your creativity. KEY CLICK duplicates yesteryears' popular recording sound of Hammond tone wheel organs. All this and more...

Quick and dramatic registration changes are yours with five PISTON PRESETS. Lighted push buttons require only one finger's touch to set the whole organ, including upper and lower manuals, plus pedals. Vibes, theater, jazz, Hammond and full organ presets offer a spectrum of concert artists' favorites.

With BASS WALK, you'll believe a string bass player is by your side. Play any One Finger Chord, or form chords yourself in any inversion. Automatic pedal patterns are created for you each time you change chords, or add a note, or change rhythms. You can release chords for automatic string bass solos. It's as simple as that.

HARMONIC TONEBARS are your symphony at home. The pure harmonics of the upper and lower manuals permit almost unlimited tone combinations. Tonebars are the innovation and tradition of the very recognizable "Hammond Sound."

AUTO VARI® 64 Rhythm patterns change the way a live drummer varies his playing. Sixteen rhythms, each with four variations, produce 64 patterns. As new as today, we've included a Disco rhythm for your musical pleasure. In addition, two or more patterns may be combined to create even more patterns and they may be programed to play continuously or change at pre-established measures.

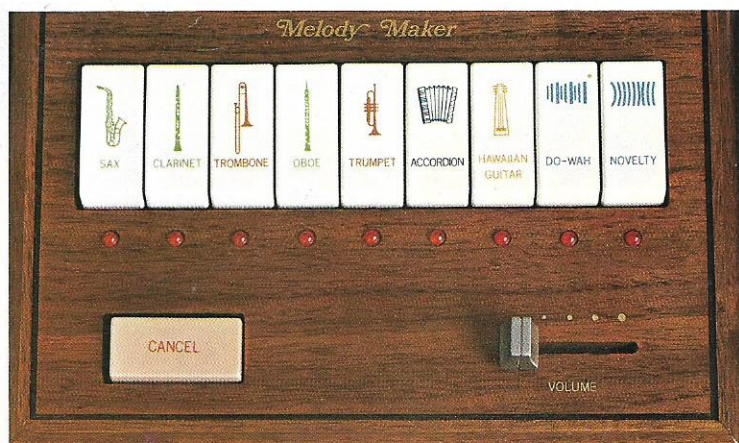
The Aurora Classic sound system is the key to the unmatched tone quality. Three separate channels offer complete sound separation and provide total versatility. One channel is dedicated exclusively for the Philharmonic Strings to insure pure, authentic string voicing. The LESLIE®

speaker system is split upper and lower, and also offers Leslie On Reverb. The dual speed Leslie changes a fast rotating dynamic sound to a slow rotating ethereal effect. The depth of the exclusive Hammond Tonebars combined with the brilliance of Auto-Vari 64 and versatile POLYSYNTHESIS PERCUSSION are channeled through the main speaker system. The MELODY MAKER instrumental solos are also enhanced through the Main channel. The famous "Hammond Tonebar Sound" may be channeled through the Main or the Leslie Speaker system. Music will envelop your room with sound generating from all three sides of the organ. With great sound like that you may want to charge admission!

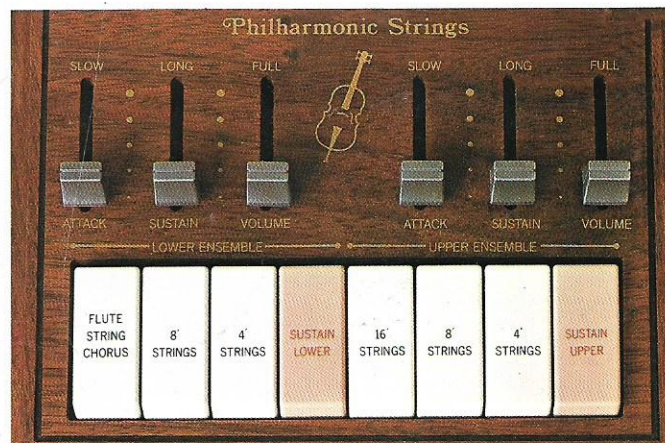
The AURORA CLASSIC...breathtaking sound...unique features...the finest quality and craftsmanship backed by the trusted Hammond name. You won't want to settle for anything less!

AURORA CLASSIC





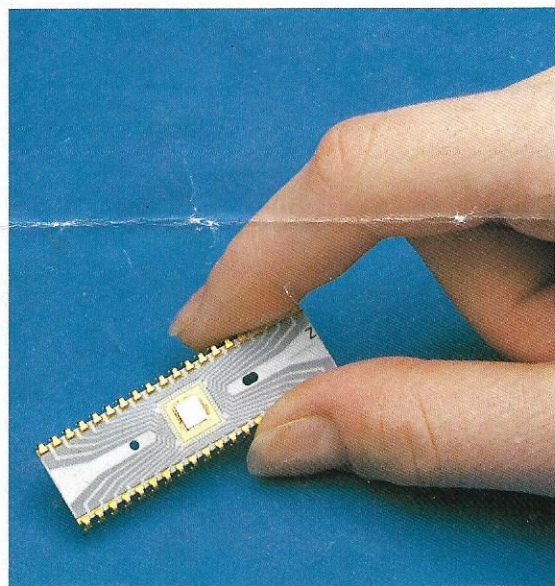
Nine "MELODY MAKER"™ solo voices, including a new Hawaiian Guitar, provide authentic voicing which may be combined with upper manual voices for dramatic orchestration.



"PHILHARMONIC STRINGS"™ provide the most versatile and beautiful string section available in a spinet organ. A special "two-phase" sound system channels the strings through both the front and side speakers to create realistic concert hall acoustics.



"FASCINATING FINGERS"™ gives you a choice of three different voices playing automatic arpeggios and other interesting note patterns for professional accompaniment and special effects.



Hammond engineering leadership is reflected in the exclusive LSI (Large Scale Integrated) multiplex synthesis circuitry for the Aurora Classic. These custom LSI circuits contain up to 8,000 separate electronics devices in each tiny (about 1/4" square) chip. The result is outstanding performance and musical integrity with unmatched reliability.

SPECIFICATIONS

- **Multiplex Synthesis Technology**
- **Two 44-note Keyboards**
- **13 Pedals**
- **Harmonic Tonebars**
Upper Keyboard: One set-of 9 Harmonic Tonebars
Lower Keyboard: One set-of 7 Harmonic Tonebars
- **Piston Presets**
Vibraharp, Theatre, Jazz, Hammond Sound, Full Organ, Cancel
- **Poly-synthesis Percussion**
Variable Repeat, Key Click, 2nd, 3rd, and 5th Harmonics, Vibraharp, Twin Mallet Marimba, Chimes, Pluck, Pizzicato, Banjo, Harpsichord, Piano, Piano Solo, Second Voices, Violin, English Horn, Post Horn, Kinura, Diapason, Variable Volume Control
- **Pedals**
16' and 8' Tonebars, Pedal Sustain, Bass Guitar, Pedal Mute
- **East Play Group**
Brite Foot™ with Rehearse and Perform, Bass Walk, Memory, Note-A-Chord™ One Finger Chords
- **Auto Chord®**
- **Auto Vari® 64**
16 Rhythms each with four variations, Measure Selector, Tempo Selector, Volume Selector, Silent/Sound, Continuous/Touch Start, Foot Switch, Foot Switch Reset

- **Follow the Player Rhythms**
Bass Drum, Cymbal, Brush, Snare Drum
- **Animation**
Leslie Lower, Leslie Upper, Leslie Reverb, Leslie Chorale, Vibrato On, Vibrato Small, Delayed Vibrato
- **Variable Reverb**
- **Melody Maker™**
Sax, Oboe, Trombone, Clarinet, Trumpet, Accordion, Hawaiian Guitar, Do-Wah, Novelty, Variable Volume, Cancel
- **Philharmonic Strings™**
Upper Keyboard: 16', 8', 4' Strings, Variable Attack, Variable Sustain, Variable Volume
Lower Keyboard: Flute/String, Chorus, 8' and 4' Strings, Variable Attack, Variable Sustain, Variable Volume
- **Sustain**
Variable Upper Manual, Variable Lower Manual
- **Fascinating Fingers™**
Patterns: Zig-Zag, Single, Up-Down, Strum
Voices: Piano, Zither, Banjo, Cancel, Variable Volume
- **Headphone Jack**
- **Speakers**
One 30cm, Two 20cm, One 15cm speakers
- **Power Amplifiers**
2-35 watt, 1-12 watt
- **Dimensions**
1,174W, 653D, 1,030H (1,235H w/music rack up)
- **Weight**
122 Kg. (including bench), bench only 12Kg

HAMMOND ORGAN

SAKATA SHOKAI, LTD.
Minami-Morimachi Chuo Building
6-2, 2 chome, Higashi-Tenma, Kita-ku, Osaka, Japan
Telex: SAKATA J63397 Tel: 06-356-2154
Cable: SAKATAINK OSAKA



Hammond Organ Company reserves the right to change prices, specifications, designs, models and discontinue without notice or liability. Due to photographic and printing limitations, the illustrations of organs contained in this literature may differ from the original in color and grain.

PRINTED IN JAPAN NH-800102